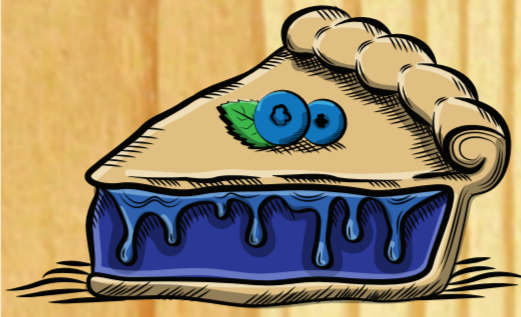


NOW AVAILABLE



BLUEBERRY

PASTRY
SOUR

Pie flavored beer?
Why not? Our
Pastry Sour series
blurs the lines between
beer and dessert. We
start with a
wheat-based kettle
sour with a hint of
graham cracker, layer
in enough lactose to
provide a sweet-tart
balance and finish it
with vanilla and
blueberry. As close as
you can get to
blueberry pie in a
glass!

BEER NOTES

DESERT
BLUEBERRY
SOUR



JACKPINEBREWERY.COM

15593 Edgewood Dr, Baxter, MN 56425

(218) 270-8072